

The Practice of Community Led Local Development on the Ground



Maura Walsh
IRD Duhallow
IRELAND

IRD Duhallow Ltd.

- Founded in 1989 by local businessman
- Initial aim generate jobs to maintain the popul.
- Integrated Local Development Company & Registered Charity
- Natural Area of Development - Covers North West Cork & East Kerry border
- Area 1,800 sq.km; Population of 30,000
- Very rural with largest town less than 2,000
- Main Problems:-Depopulation – Out-migration, Reliance on Agriculture, Lack of jobs locally, Lack of jobs for women, A Growing Elderly dependant population

IRD Duhallow as an Integrated Local Development Company

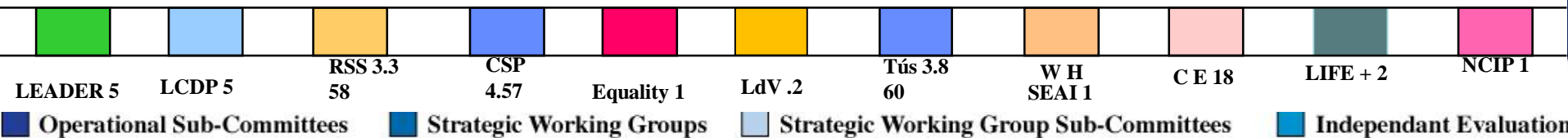
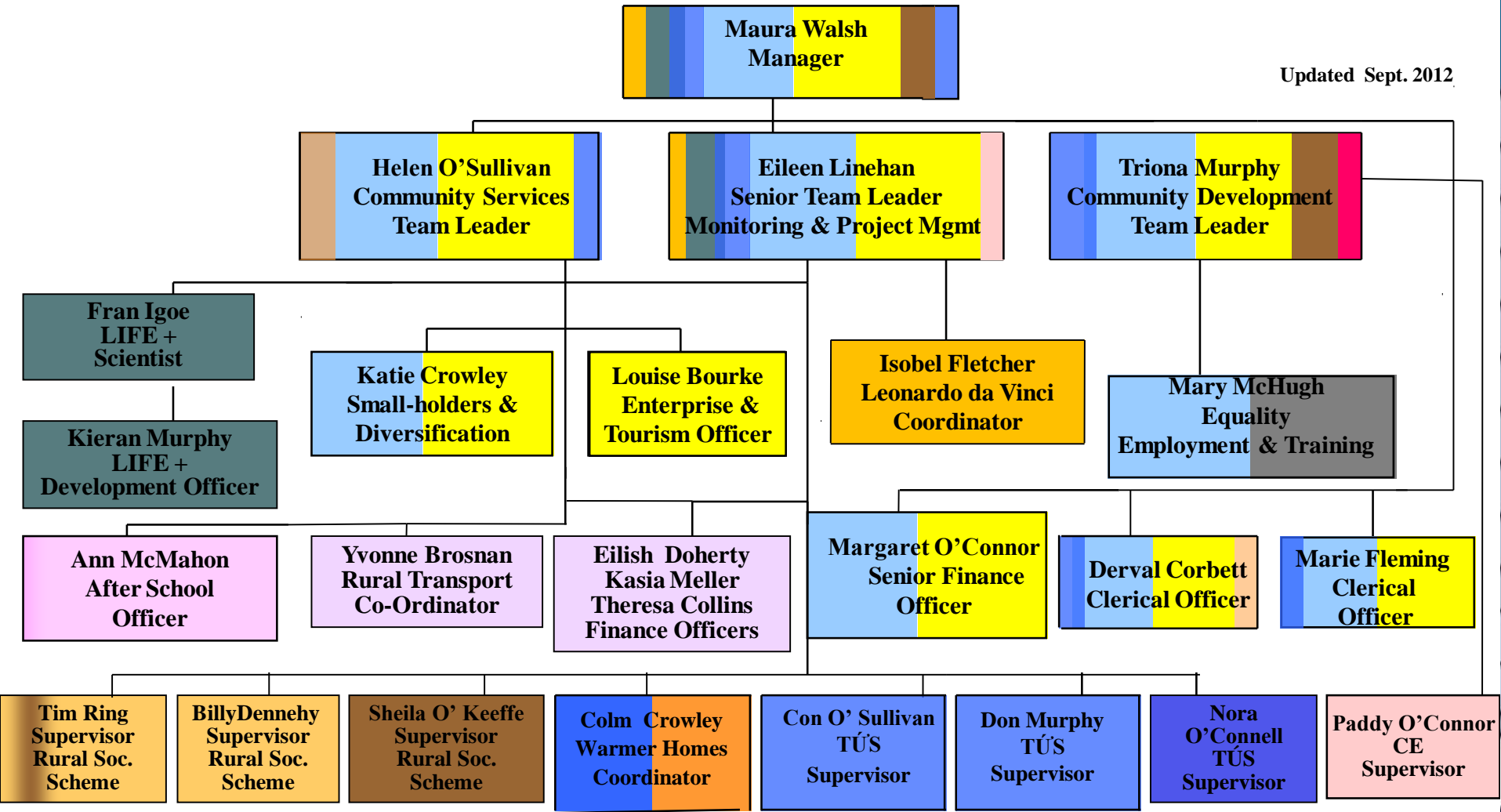
- Not just a Programme Administration
- Structure affords capacity to deliver multiplicity of programmes relevant to local area
- This innovative approach to rural development –means there is a wide range of programmes addressing a variety of needs
- Programmes Delivered:- LEADER, Life+, Local Community Development Programme, Rural Social Scheme, Warmer Homes Scheme, TÚS, Community Services Programme

Evolution of LEADER

- LEADER Pilot 1992-1994
 - Established the LAG & Bottom up Approach
- LEADER II 1995-2000
 - Innovation – encouraged LAG to do new things in new ways – built capacity of LAG
- LEADER+ 2000-2006
 - Thematic approach to Local Strategic Planning
- Mainstream LEADER 2009-2014
 - Gave LEADER scope to deliver across the 4 axes
- Community Led Local Development 2014-2020

IRD Duhallow Staff Structure 2012

Updated Sept. 2012



IRD Duhallow Board Structure 2012



IRD Duhallow LEADER 2007-2013 Strategic Overview

A Living Country Side

- Environment Awareness
- Village Enhancement
- Develop Iconic Walks
- Develop Angling Centre
- Heritage Management
- Preservation & Restoration
- Enhance Built Heritage
- Sustainable Land Use
- Protect Habitats & Ecosystem

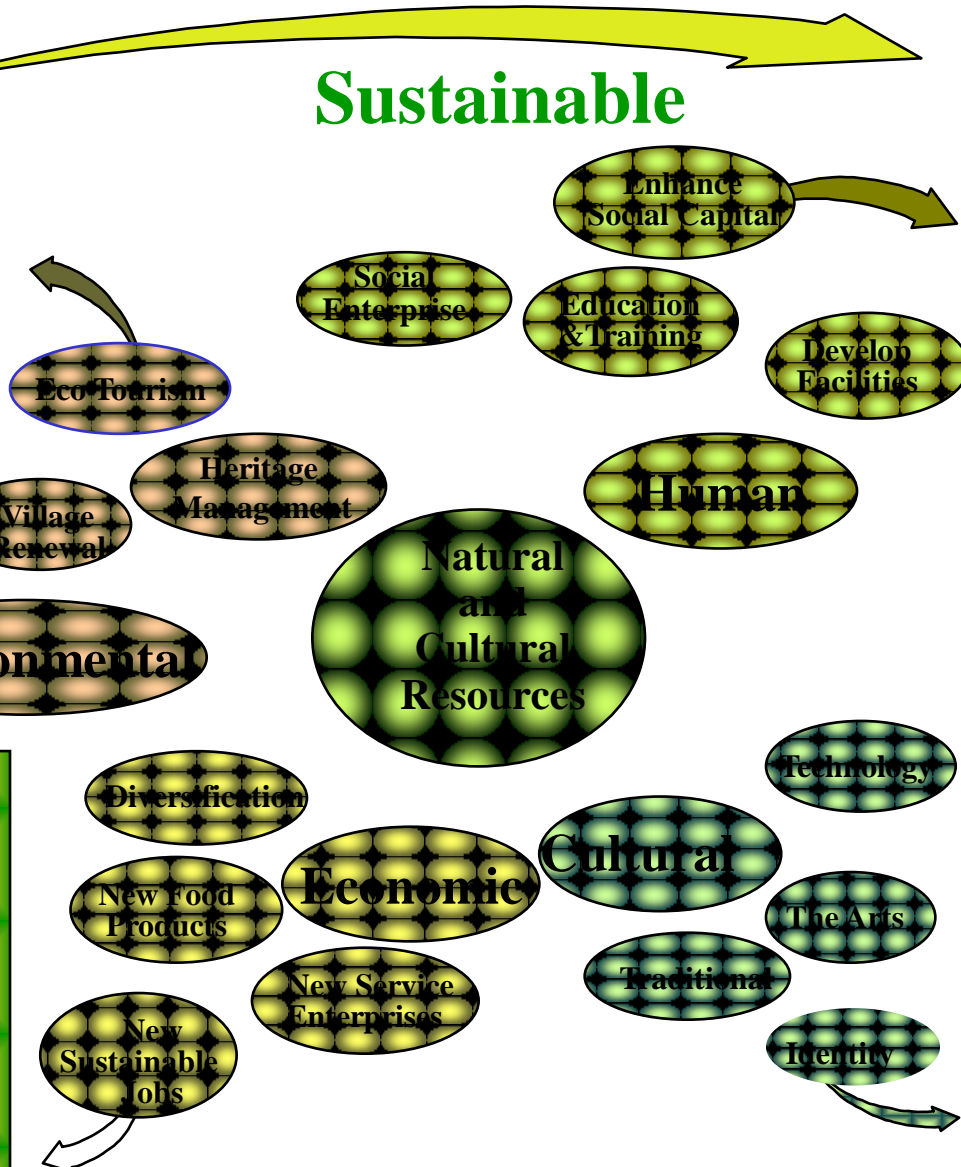
Sustainable

- Increase participation of Youth & Women & over 60's
- Develop Community Facilities
- Fund Community Enterprise
- Improve Local Services
- Training, Management & IT
- Staff & Board Training
- Animate & Capacity Build
- Support Networks
- Establish Trans-national links

Improve Quality of Life

Sustainable Growth

- Enterprise Infrastructure
- Technical Support
- Capital Investment
- Recruitment Assistance
- Product Development
- New Food Businesses
- Mentoring
- Networking
- Pluri-activity
- Farmers Markets



- Expand Cultural Centres
- Develop Craft Enterprises
- Celtic Spirituality Centre
- S'Luachra Summer School
- Schools Creativity Programme
- Fund Cultural Publications
- Marketing & Promotion
- Community Arts Prog
- Public Art -Women & Heritage

Foster Creativity

Rural Development

Human

Improve Quality Of Life

No. of volunteers involved in all aspects of R.D. Increases exponentially each year

Increase participation of Youth , Women & over 60's



Culture Foster Creativity



Expand
Cultural
Centres



Develop
Craft
enterprises



Enterprise
Infrastructure

Economic Sustainable Growth



Dawn Chorus



Environment A Living Countryside

Bat Watch



Protect
Habitats &
Ecosystems



Social Inclusion

- Local Community Development Programme
- Prioritises marginalised people
- Delivered with a **LEADER** ethos



The Asset Based Community Development Approach Has provided Duhallow with 100 jobs providing Essential Services to the Elderly



**Duhallow Area Rural Transport
Carried 58,000 passengers 2011**



**Duhallow Community Food Services
Delivered almost 22,000 meals**



**Warmer Homes Scheme
Insulated 500 homes 2011**



**9 Trained Volunteers carried out
127 jobs for the elderly**

Small-holders provide valuable community services through Rural Social Scheme



**16km of river-bank cleared
Of Himalyan Balsam Life+**



Improvement of walkways & amenities



Community Enhancement



Community Administration

Community Led Local Development

- European Commission's Proposal to deliver a range of European funds against a single strategy:- European Social Fund, Regional Development Fund, Fisheries & Rural Development Fund can combine at LAG level
- Irish Local Development Groups highlighted as best practice and a 10% top up on EU Funds offered to Countries who adopt CLLD
- Any Alignment proposals must not jeopardise LEADER Partnerships for 2014-

Since it's inception IRD Duhallow

- Created over 1,200 new jobs
- Sustained Enterprises providing 1,500 jobs
- Levered over €50m into Duhallow
- Provided over 6,000 Training Places
- Placed over 800 in employment
- Created over 650 childcare places
- Supported 130 Community & Voluntary Groups
- Enabled Networking & Co-operation
- Funded over 850 projects by communities
- Implemented 30 National & EU programmes through a single Community Based Rural Development Structure



- Assisted 56 publications
- Convened 120 Seminars and Conferences
- Developed 25 amenities & visitor attractions
- Assisted 25 new accommodation units
- Empowered over 5,300 young people to get involved in development projects
- Initiated support projects in 30 schools
- 5 Duhallow Schools in Young Entrepreneur Prog
- Carry over 58,000 passengers through Rural Transport each year
- Developed Transnational linkages with 27 countries

Conclusion

IRD Duhallow

has Local Legitimacy

conferred on us by the

Communities of Duhallow

Empowerment Made Real